



SPEED GATES | TURNSTILES |
ROAD BLOCKERS |
BOLLARDS | GATE BARRIERS

SECURITY IN FITNESS CENTERS

In the fitness industry, turnstiles are essential for a seamless member experience. They automate the check-in process, prevent unauthorized entry, and ensure a smooth flow of clients even during peak hours. Integrating professional turnstiles allows gyms to maintain high security standards while focusing on member convenience.”



TURNSTILES AND SPEED GATES FOR FITNESS CENTRES

Turnstiles at fitness centers and health clubs are essential for managing member access and ensuring a smooth flow of visitors. They help automate the check-in process while protecting the facility from unauthorized entry. Here's why turnstiles are essential in the fitness sector:



Access control:

Turnstiles provide seamless entry management by integrating with membership cards, QR codes, or mobile apps. They ensure that only active members can access the workout areas and specialized zones.



Prevention of unauthorized access:

Turnstiles act as a physical barrier that prevents unauthorized entry. This ensures that the gym facilities remain exclusive to paying members and registered guests.



Perimeter security enhancement:

Installing speed gates or tripod turnstiles at the reception creates a clear boundary between public areas and the gym floor. This reinforces the club's internal security and helps manage visitor traffic effectively.



Audit and monitoring:

Integration with club management software allows for real-time tracking of attendance and peak hours. This data is important for optimizing staff schedules and improving the overall member experience.

SEAMLESS ACCESS: SMART INTEGRATION WITH YOUR MEMBERSHIP SYSTEM

Elevate your member experience by connecting your access control hardware directly with your gym management software. Our turnstiles integrate effortlessly with RFID readers, QR code scanners, and mobile entry systems. This synergy ensures that only active members gain entry, while your staff stays focused on what matters most—your clients. With real-time data sync, you can monitor facility occupancy and peak hours with professional precision.

✔ Prevent membership fraud

Ensure 100% accurate validation and eliminate unauthorized entry or membership sharing.

✔ Data-driven management

Access real-time attendance analytics to better understand peak hours and optimize facility operations.

✔ Optimize staff resources

Free your front desk team from manual check-ins, allowing them to focus on sales and member support.

✔ Faster entry flow

Provide a modern, contactless experience that eliminates queues and ensures a smooth start to every workout.



KEY ASPECTS OF TURNSTILE INSTALLATION AT FITNESS CENTRES

✓ Turnstile placement:

The positioning should ensure a logical flow from the entrance to the changing rooms, avoiding bottlenecks during peak evening hours. Proper placement helps receptionists monitor entries while focusing on member service.

✓ Turnstile type:

Stylish speed gates are often preferred for their modern design and high throughput, while compact tripod turnstiles are ideal for smaller boutique studios. The choice should match both the aesthetic and the expected volume of members.

✓ Integration with other security systems:

It is crucial to sync turnstiles with the gym's CRM, video surveillance, and fire alarm systems. This ensures a comprehensive approach to safety and automates the membership verification process.

✓ Risk assessment:

Evaluating potential security gaps, such as unauthorized entry via exit gates, helps in choosing the right equipment. Regular assessments ensure the access system remains effective as the club's membership grows.

✓ Technical maintenance:

Regular servicing is necessary to handle the high frequency of daily use in busy fitness clubs. Periodic checks of sensors and mechanisms prevent downtime and ensure consistent operation.

✓ Staff training:

Reception and security staff must be trained in operating the turnstiles and managing emergency manual overrides. This ensures quick reactions to technical issues and maintains a high level of hospitality.



ROAD BLOCKERS AND BOLLARDS FOR FITNESS CENTRES

✓ Vehicle access management:

These systems allow precise control over who enters the gym's private parking lot. They can be integrated with RFID tags to provide entry for gym members.

✓ Perimeter security enhancement:

Installing bollards along the building's storefront protects gym-goers and equipment from accidental or intentional vehicle impacts. They create a safe pedestrian zone around the entrance without looking intrusive.

✓ Prevention of unauthorized access:

Road blockers provide a formidable barrier that stops non-members from using the club's parking spaces. This ensures that your facilities remain accessible and convenient for your actual clientele.

✓ Audit and monitoring:

Integration with parking management systems allows for tracking vehicle occupancy and stay duration. This helps management understand peak parking times and improve site security protocols.

Road blockers and bollards at fitness centers are vital for securing the facility's exterior and managing member parking. They provide a strong physical defense for the building's facade and ensure that parking remains reserved for authorized users. Here's why road blockers are essential in the fitness sector:



KEY ASPECTS OF ROAD BLOCKERS INSTALLATION AT FITNESS CENTRES

To ensure effective exterior security, several key factors must be considered when installing road blockers and bollards:



Device placement:

Blockers should be strategically placed at driveway entrances to prevent vehicle-related damage. Proper placement ensures that the gym looks professional while remaining fully protected.



Integration with other security systems:

Road blockers should be connected to the facility's overall security network, including CCTV and license plate recognition. This creates a unified defense that coordinates vehicle entry with the gym's membership database.



Staff training:

Facilities managers must be trained in the emergency operation and manual override of vehicle barriers. This ensures that emergency vehicles can enter quickly if needed and prevents accidental activation.



Equipment type:

The choice between automatic bollards for high-frequency driveways and fixed bollards for perimeter protection depends on the site's specific needs. Selecting the right impact-rated hardware ensures maximum safety for members and staff.



Technical maintenance:

Given their exposure to the elements, regular maintenance of hydraulic or electric components is essential for reliable operation. Scheduled inspections help identify wear and tear, ensuring the perimeter stays secure in all weather conditions.



Risk assessment:

Conducting a thorough assessment of the surrounding traffic and potential vehicular threats helps determine the necessary crash rating for the equipment. This proactive approach ensures the fitness center is prepared for any external risks.

ADVANTAGES OF TISO SPEED GATES AND ROAD BLOCKERS FOR FITNESS CENTERS



Comprehensive high-level security:

TiSO provides a multi-layered defense, combining elegant speed gates for member access with robust road blockers for perimeter protection. This integrated approach ensures a safe environment for both visitors inside the gym and vehicles in the parking area.



Exceptional durability and reliability:

Our equipment is engineered with premium materials to withstand both intensive indoor foot traffic and harsh outdoor weather conditions. This guarantees long-term reliability and consistent performance across all areas of your fitness facility.



Customization and aesthetic flexibility:

We offer extensive design options, from sleek finishes for speed gates that match your club's interior branding to various bollard configurations for site-specific needs. This allows our security hardware to blend seamlessly into the modern architecture of any sports complex.



Seamless integration with modern systems:

TiSO solutions integrate effortlessly with gym management software. This automation creates a frictionless «hands-free» experience for members while simplifying access control for your staff.



Ease of operation and maintenance:

Designed for user-friendly daily use and quick servicing, our systems ensure minimal disruption to your club's operations.



International certification and quality assurance:

All TiSO products are manufactured and certified according to global standards, including ISO 9001 and international crash-test ratings. This gives fitness center owners peace of mind, knowing their facility is protected by proven and trusted security technology.



OUR SOLUTIONS: ACCESS CONTROL

BOOM BARRIERS (OPTIMUS-50 BM)

The Optimus-50 BM automatic barrier with a 24V BMDrive® mechanism is a reliable and efficient solution for access control in private, commercial, and industrial areas.



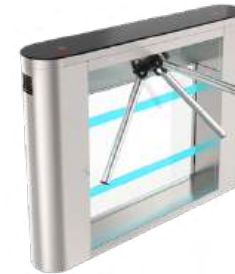
SPEEDBLADE

It's a type of motorized turnstile featured with retractable flaps operation principle. Housing materials and light weight cabinets' shape make Speedblade turnstile universal for a large variety of facilities.



GALAXY-M

This turnstile access consists of transparent glass framed by high strength steel. The contemporary design of the cabinet is a stylish addition to the range. Galaxy - M has a new mechanism Triservo-M.



TWIX

Design is sleek and elegant, it will fit perfectly in both modest interiors as well elegant office buildings. Robust design and high quality materials will ensure reliable operation for years.



ONYX-M

Ergonomically designed with stylish lines which encapsulates a sturdy chassis and efficient control system, producing a unit which is ideal for today's contemporary interiors. These turnstiles are equipped with a bi-directional servo-drive mechanism with a robust locking system and an automatic anti-panic system.



ONYX-GS

The ergonomic design of the servo-driven gate Onyx-GS with smooth curves of the case is an excellent solution for installation together with tripod turnstiles of the Onyx series. Access control in both directions is carried out by turning the leaf in 90° automatically by BMDrive® mechanism (no need to push).



JETPAN

This speedgate is ideally suited for areas with unmanned security, as higher wings prevent vaulting over the turnstile. The Jetpan is also fitted with optical sensors to prevent tailgating. The contemporary design, appearance and functionality makes the Jetpan suitable for a variety of building entrances.

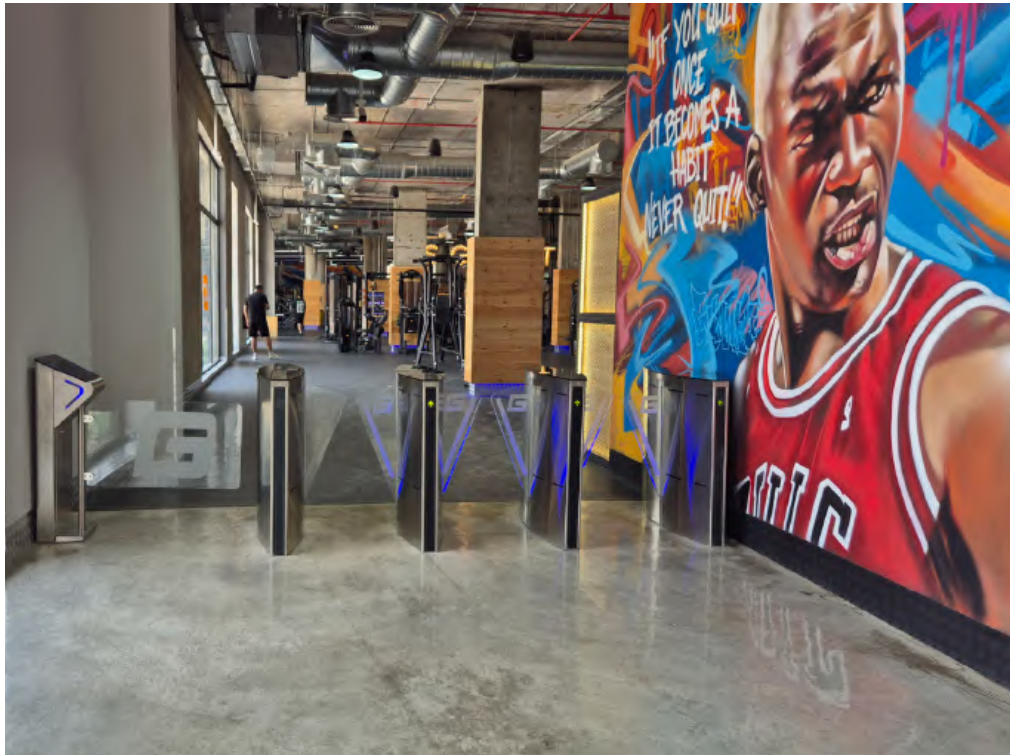


SESAME-S

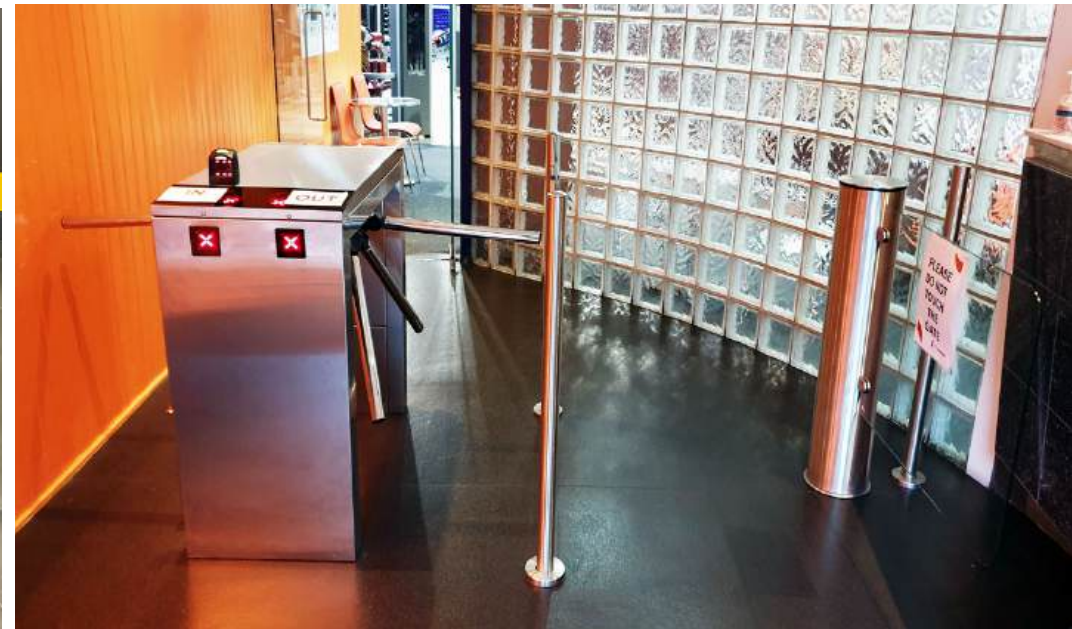
It's a one-lane type of full height turnstile gate. It ensures vandal proof security level to a large variety of possible applications. Strength and durability is granted by robust fully welded design.



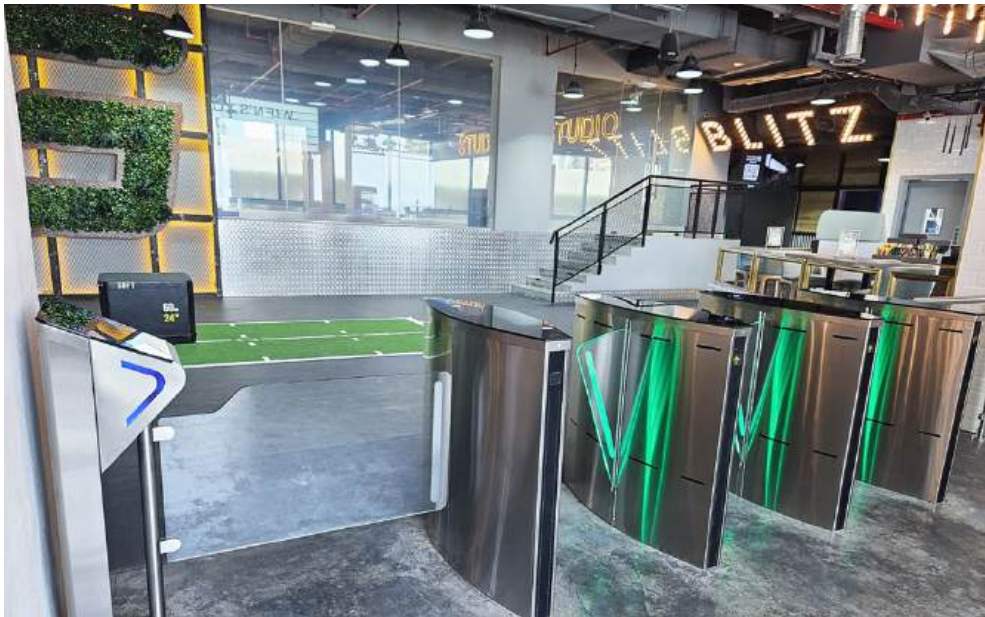
GALLERY OF INSTALLATIONS



GALLERY OF INSTALLATIONS



GALLERY OF INSTALLATIONS





TISO Global

Kyiv, Ukraine

tel.: +380 (44) 291-21-11
e-mail: sales@tiso.global
www.tiso.global

TISO UK

4, BYWORTH CLOSE

Bexhill-on Sea
East Sussex TN39 4NX
tel.: +44 7800777636
e-mail: sales@tisouk.com
www.tisouk.com

TISO ME

Dubai, UAE

Dubai South, B4 Building,
Office 231, P.O. Box 712990,
tel.: +971 4 548 67 77
tel.: +971 56 799 68 08
e-mail: sales.me@tiso.global
www.tiso.global

TISO APAC

Singapore

78 Bedok North Road,
Unit 14-232, 460078
tel.: +65 62506 0515
e-mail: sales.apac@tiso.global
www.tisoapac.com



LET'S MAKE LIFE SAFER!